

# User Guide



Thank you for purchasing  
**IMPULSE™**

Impulse is designed and tested to be compliant with the FMVSS and international safety standards. Read this entire manual, front and back, before installation.

## Warning

Improper installation or a failure to follow this guide in its entirety could be unlawful and result in damage, injury, or death. Impulse is not designed to provide added safety in all kinds of potential car crashes and cannot guarantee any particular crash will be mitigated or eliminated. There is no substitute for safe driving. All studies and figures are based on available research for Adaptive Brake Lights - the core technology on which Impulse is based.

Contains non-rechargeable lithium battery: fire, explosion, and severe burn hazard. Do not recharge, disassemble, heat above 100°C (212°F), incinerate, or expose to water.

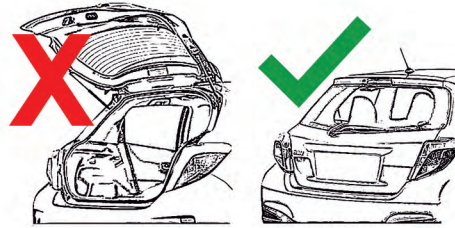
The Leveling Arm is not a toy: keep out of reach of children and pets as the liquid vial could be harmful or fatal if swallowed. Do not store the Leveling Arm in direct sunlight.

Do not drive with Impulse if it limits your visibility to the rear of the vehicle.

Failure to perform uninstallation properly may result in injury and damage to the vehicle's window, aftermarket window tinting, or the Impulse unit itself. See [www.FrontLane.com](http://www.FrontLane.com) for instructions.

## 1 Prepare for Installation:

- ⚠ Make sure the rear window is **clean and dry**.  
No convertibles.  
No roll-down (sliding) rear windows.  
The car must be on flat ground.  
*Rear window must be closed during installation.*



## 2 Slide off the top cover. Leave it off for now.



## 3 Turn on

- 4 Choose brightness:  
HIGH for dark windows,  
LOW for normal windows

## 5 Choose response mode:

PULSE is recommended, but use STEADY when legally required. Use STEADY mode if unsure, or check local laws.

## Warning

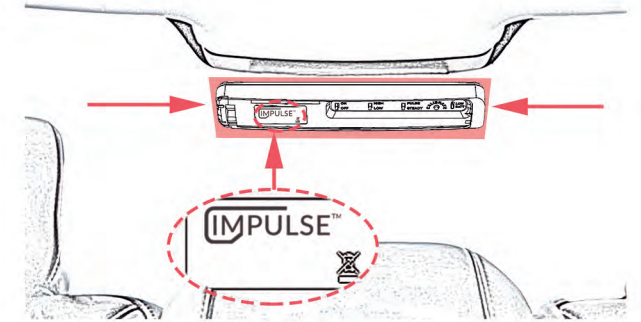
FrontLane is not responsible for any fines and penalties caused by improper selection of the response mode.

## 6 Practice installing

- ⚠ Since the adhesive lasts for years, the installation **CANNOT BE CHANGED** without new adhesive.

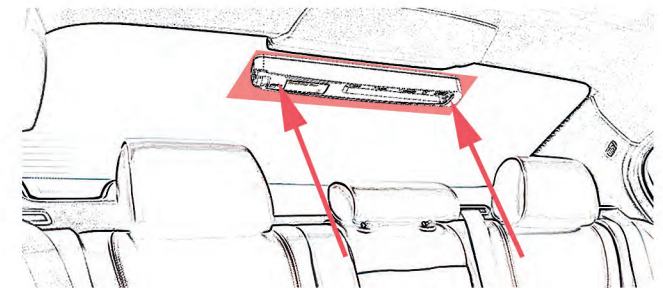
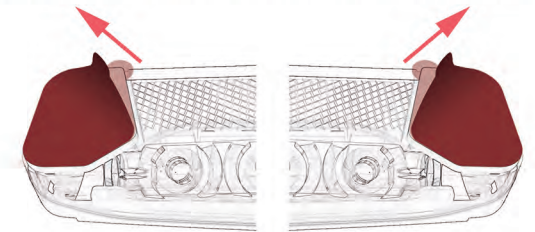
Before installing Impulse, hold it to the window **exactly** where you want it. Make sure it is *inside* the car and does not obstruct your view. It must be installed:

- (A) in the top-center of the glass of the rear window
- (B) horizontally
- (C) correct-side up



## 7 Attach

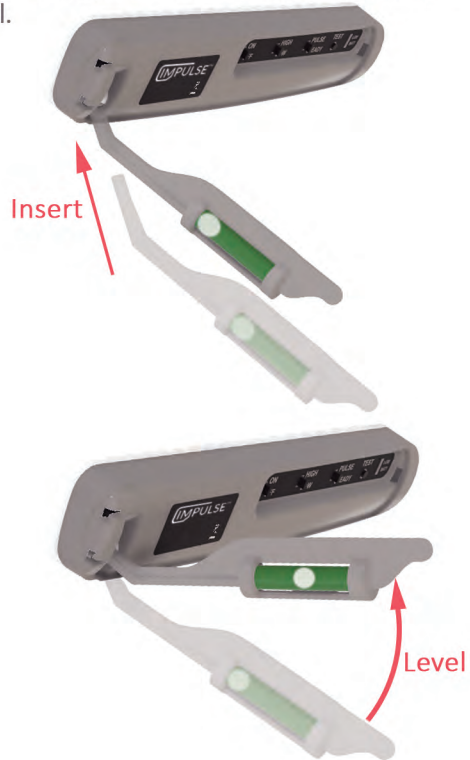
- (A) Peel off the adhesive liner
- (B) Attach Impulse exactly where you want it
- (C) Push firmly for 5 seconds to remove air bubbles





## 8 Level the brake light

Different vehicles have rear windows at different angles. Make the brake light horizontal for your vehicle by inserting the Leveling Arm and raising it until it is level.




## 9 Calibrate

Press and hold the CALIBRATE button for 5 seconds to calibrate the system. The brake light will then illuminate.



## 10 Reattach the top cover


While applying pressure, slide the top cover to the right to reattach it.

 Activation occurs when braking from over 30 mph. When driving with the hatchback open, turn Impulse OFF, because it is not calibrated for this new position.



## Important Maintenance

- Every 6 months, test the battery and calibrate the system by repeating steps 8, 9, and 10. If the unit does not illuminate, turn it off for 15 seconds to hard reset the calibration, then repeat steps 8, 9, and 10.

 Impulse's calibration must be updated periodically or it may drift out of range and prevent illumination.

## Note

- If the brake light is not level, it will be less visible to following drivers.
- To test the system, short-press CALIBRATE.
- If the LOW BATT indicator flashes, there are fewer than 6 months of battery life remaining.
- The battery is designed to last 4 years for the average driver. Depending on factors such as environment and driving style, the battery life could be much shorter or longer.

## Troubleshooting

- Why does Impulse illuminate on urgent braking only? Extensive studies on rear-end collisions show that this is the most effective method to add safety; it ensures that following drivers are responsive but never distracted or annoyed.
- The brake light does not illuminate If the rear window/door can open, make sure it is closed for installation. Turn Impulse off for 15 seconds before turning it on and recalibrating. Upon hard braking, it will then illuminate.
- Impulse was improperly attached to the window More adhesive is available. Email: [help@FrontLane.com](mailto:help@FrontLane.com)
- There are air bubbles in the adhesive Press around Impulse firmly (including the middle) to remove any air bubbles.
- How do I uninstall Impulse? For instructions to the 60-second uninstallation, visit [www.FrontLane.com](http://www.FrontLane.com)
- What's the difference between PULSE and STEADY? In PULSE mode, Impulse pulses the LEDs upon hard braking. In STEADY mode, the LEDs do not pulse, but instead get ultra-bright. Both of these modes are proven to get attention quickly.

## How It Works

Impulse is an Adaptive Brake Light - it intelligently responds to braking force to protect against rear-end collisions. It has a built-in motion sensor that wirelessly checks for braking over 200 times per second. When hard braking is detected, Impulse illuminates to get the following driver's attention faster. For more information, visit us at [www.FrontLane.com](http://www.FrontLane.com).

Impulse is rugged, designed to stay on the window in any temperature and on any road. The built-in battery lasts the life of the product. At the end of its life, Impulse should be disposed of safely and one should never attempt to replace its highly specialized battery.

HIGH brightness is 235 cd, LOW brightness is 160 cd. Colder temperatures and battery aging can cause these values to decrease.

© FrontLane, Inc.  
All rights reserved.

Made in China

Patents: 11,014,492, D898,964

For more information, visit us at [www.FrontLane.com](http://www.FrontLane.com)

